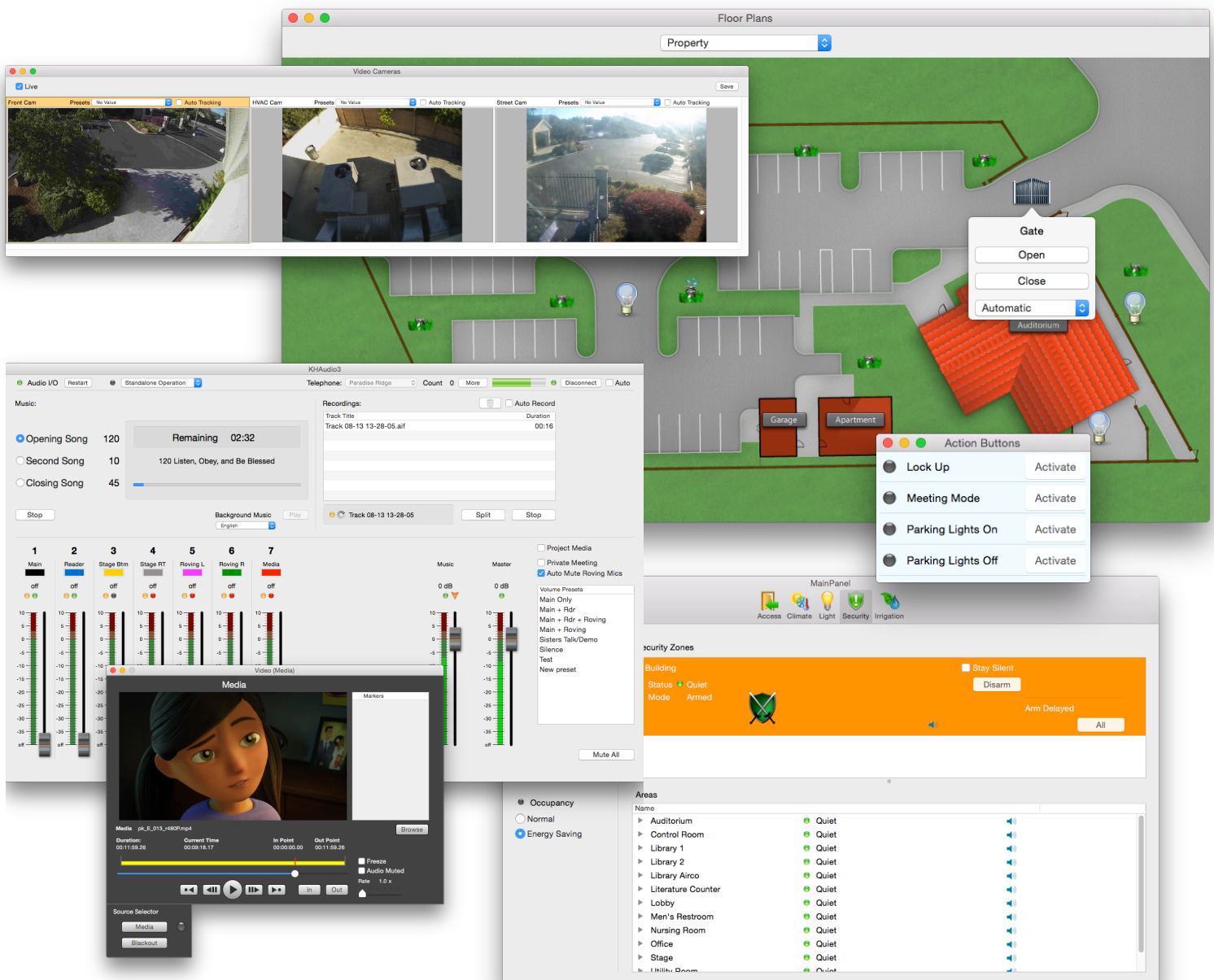


Setting up a new Mac for KHAudio, SL Studio, Cobalt, Chromium or KH Control Systems



This manual is very straightforward and as short as possible. It covers the setup of a brand new Macintosh computer to be used for any of the following systems:

KHAudio (KH sound system with video media and streaming support)

SL Studio (Personal, Group, KH or AH versions of sign language applications)

Cobalt (AH sound system)

Chromium (AH video operation system)

KH Control System (building automation system specifically for KHs/AHs)

As this is a manual for installers, we assume that you have:

- Working knowledge of how to operate an Apple Mac.

Setting up a new Mac for the first time

Read the bullet points provided hereunder before starting the system. As you go through a first system setup, the system might ask you about these items. They are listed here in no particular order so make sure you have this info handy for your reference when needed.

- **Language**
Select English even though there might be Spanish or other language operators that will use the system. You really don't want to be switching the OS itself back and forth between multiple languages, it can get very confusing and multi-language support is not really made to be constantly switched on the fly. Most other language operators will understand the few terms they need to know in English like Applications, File, Open, Save, Quit, Hard Disk, etc.
- **Apple ID**
If the system asks you to sign in with an existing Apple ID and you had one set up for that site (it should have been used for any Mac at that site), enter it now. If you didn't have one, create a new one with a name that makes sense for that site. Please think hard about the name because it will be hard to change it afterward. The name needs to represent the place, not a specific congregation. So **san-francisco-north-kh@icloud.com** is better than sf-spanish or paradise or matt24 or something like that. We suggest expressing the city and location rather than a local congregation name or a randomly made up name. If you care about privacy and security and any emails not being harvested for marketable information, you should not use a gmail, yahoo, aol or hotmail email accounts as an Apple ID. It is probably best to just use the free iCloud email account that comes with it as Apple at least has made specific statements about not harvesting email or other personal account info. Never sign in with your personal account !
- **Registration**
If the system asks you to register you can go ahead and supply the info. Be sure to register for that KH (or AH) and their Operating Committee or Chairman, not as a private person !
- **Sending Analytics**
During the first startup the system might ask if it is allowed to send information like anonymized crash reports to Apple for diagnostics. Hmmm, personally I think Apple should test their own

software and systems and not ask me to be there beta tester. But it is up to you what you answer here. It won't likely affect system performance but on Cobalt or KH Control Servers, turn that off.

- **Transferring Account Info from a Previous System**

For the type of use of these systems, you typically would want to set up a system cleanly and not inherit all kinds of settings, applications and account info from older systems. So generally select the option for a clean setup (no transfer from anything else).

- **Setting Up a User Account (VERY IMPORTANT)**

When the system asks you to set up a **first user account**, **MAKE SURE** you are specify **“System Manager”** as the **Full Name**. The system will then generate an account name like “systemmanager”. **CHANGE THAT to “sysman”** as you will need to enter this one over and over again when authorizing stuff.

For the password make sure you use something that is not easily guessed or cannot be read as a standard word or simple combination of words. In no case use years like 1914, 1931, 1935, etc. Make sure you properly register that name and password and hand it to the operating committee chairman to store. **WHEN YOU LOOSE THIS NAME AND PASSWORD, YOU WILL BE IN DEEP TROUBLE !**

The system may guide you through some simple other things before it actually is ready for use. Use common sense when answering any other questions.

Configuring the System Manager Account

When logged in to the System Manager (sysman) account, open the System Preferences panel and configure the system according to the following recommendations:

- **General**

Set **Highlight color** to Orange (contrasting with virtually all other colors)

- **Desktop & Screen Saver**

Set the desktop to **Solid Colors**: blue. This will prevent unnecessary overhead of the graphical system and will remove unnecessary distraction as well.

Set the **Screen Saver to Start: Never**. We don't need to tax the GPU with frivolous graphics. The display will be protected against wear by shutting it down in sleep mode when not operated.

- **Mission Control**

Turn off all spaces, shortcuts and Hot Corners. All these frivolous “features” are way too confusing for your operators anyway. Let's keep it simple.

- **Security & Privacy**

Allow apps downloaded from Anywhere. We don't ask Apple to qualify us as reliable developers. Just don't just install any apps you don't know the developers of. For any installation the system will ask you for an admin name (sysman) and password anyway. So any malware on this system will have been voluntarily installed by YOU (or others you are sharing the sysman password with! Nothing will protect you against yourself...

- **Notifications**

If this system is to be used as a server then **Turn on Do Not Disturb** from 12:00 AM to 11:59 PM. Nobody will be looking at them anyway.

- **Displays**
This will be addressed for individual purposes in other documents.
- **Energy Saver**
For any server set the **CPU** to **Never Sleep**.
Turn display off after 1 hr (15 mins for servers).
For systems running KHAudio or Cobalt Server, **turn off: Put hard disks to sleep when possible**.
For other purposes turn this on.
Turn off **Enable Power Nap**.
Turn on Automatically Restart After Power Failure.
- **Mouse**
Configure the right mouse button for secondary click.
Use natural direction scrolling.
Turn off all other frivolous gestures/swipes as it only confuses operators.
- **Sound**
Make sure **Sound Effects** are set to something clean and clear like **Glass** and play through **Internal Speakers** or **Display Speakers**. Alert volume should be set to be audible only to the operator not to the general audience.
For audio systems, make sure that under no circumstance, **Output or Input** is set to **Presonus FireStudio Project** or any other used interfaces. Those interfaces are supposed to be used by the specific apps installed to handle sound like KHAudio or Cobalt.
- **Network**
Make sure Ethernet is connected, enabled and properly configured. All other network interfaces **including WiFi** should be turned off.
Also turn off **Show WiFi status in menu bar**. We don't want operators to turn it back on. You should be hard wired.
- **Sharing**
For **Computer Name**, enter something sensible that identifies the role of that system and possibly the place of installation. Example: **Cobalt Operator iMac** or **Fairfield SL System** or **Cobalt Server** or **Paradise Ridge Sound**.
Turn on **Screen Sharing** and **File Sharing**.
If you want remote support then turn on **Remote Login** as well.
- **Users & Groups**
Turn off **Allow guests...** and **Allow guest users...** We don't allow guests in anything.
Under **Login Options**, select **Show fast user switching menu as Full Name**. This will allow you to instantly switch between the sysman account and other operator accounts.
For details about configuring operator accounts, see below.
- **App Store**
Turn all automatic checks off. You don't want to be disturbed by this at inconvenient moments. You should regularly check this manually by revisiting this panel and clicking **Check Now**.
- **Date & Time**
Set the proper time zone for your system.
Under **Clock**, check **Display the time with seconds**. This will give any remote support person an indication of the speed of the upload connection (and whether you still are connected).

Close the **System Preferences** and make sure your desktop is empty and you are in the **Finder** (see menu next to Apple menu).

Goto **Finder menu > Preferences** and configure as follows:

- **General**
Select all checkboxes. You want to see everything connected to your system.
- **Sidebar**
Unselect Movies, Music, Pictures. Those are user specific content which you likely won't ever be using on this system.

You might want to set your Finder windows to always open in Column View, a fast way to navigate your directory structures.

Adding an Operator Account

An operator account should be added for typical use of the system. For KHAudio you could setup a user called Sound Operator and for the SL Studio operators, a user called SL Operator. However with the video and audio functionalities now totally bleeding into each other, you might as well make a single user account called **Operator**.

Set up a new account in **System Preferences > Users & Groups** by clicking the lock to unlock first and then clicking the +.

For the **New Account** you will need to decide if you want to put limits on what apps the operators can use or just want to protect against installing frivolous changes to the system. If you want to make sure you have control over what apps that can be opened you need to set the account type to **Managed with Parental Controls** which gives you more fine-grained control over what the operator can and cannot run on the system,

Otherwise select **Standard** which lets them run any app but it doesn't allow them to do new installs without the **sysman** account name and password.

As a **Full Name** use **Operator** and for the account name specify **operator**. Select **Password > Use separate password** and enter a password (and once more for verification). Make sure you keep track of this password. Pick something simple as all operators need to have it in order to log in.

Clicking **Create User** will make the system configure a new home directory structure for the new user (under the account name). Log out of the **sysman** account and into the **operator** account.

Follow the procedures described above under **Configuring the System Manager Account** for the **operator** account as well. Furthermore re-arrange the dock so it only displays the typically used apps (KHAudio, SL Studio KH, Cobalt, Safari, FaceTime, Notes) along with the Application Folder, the Documents Folder, the Downloads Folder and in case of an SL System, the Playlists Folder.

if you configured a **Managed with Parental Controls** account, then log out of this account and log back in as **sysman**. Complete the configuration of the **operator** account by going to **System Preferences > Parental Controls** and select the **operator** account. Turn off the applications you don't want the operator to run and set up any other restrictions as desired.

Make sure you run the operator apps like KHAudio, Cobalt, SL Studio, Media Updater, etc at least one from within the **operator** account after everything is configured such that those apps can properly configure access privileges (they might require **sysman** authentication which can be entered on the fly).

Enjoy !